



## MODEL 2404 ANNUNCIATOR

.... *Visually identifies an abnormal device or condition.*

### FEATURES

- All solid state circuitry.
- Optically isolated alarm input contacts.
- 120VAC/24VDC/12VDC power source.
- Long life LED indicating lamps.
- Can accommodate from one to four points per unit.
- Switch selectable lock-in/nonlock-in and N.O./N.C. alarm input controls.
- Optional time delay on input.

### DESCRIPTION

The Essex Model 2404 Annunciator is designed to monitor Alarm Contacts and provide "point" indication on the device which is alarming. The standard unit comes equipped to monitor two remote points, but can be optionally equipped to accommodate four points.

Each point has a selector switch located on the 2404 drawout PC board, which will allow the point to be set up to monitor a normally open, or normally closed contact. A lock-in/nonlock-in switch is also provided on the PC board for each point.

On lock-in or nonlock-in, the alarm indication flashes until acknowledged, whereupon it will light continuously until the field condition is corrected. In lock-in status, the alarming point must be acknowledged before it will reset. In the nonlock-in status, the unit will cease to alarm if the point being monitored returns to normal.

An auxiliary output NPN transistor is standard for each alarm point. Transistor follows activation of the field input contact.

An optional 0.1 to 60 second time delay is available on the input circuit. This avoids unnecessary alarm indication for those conditions which may be only momentary.

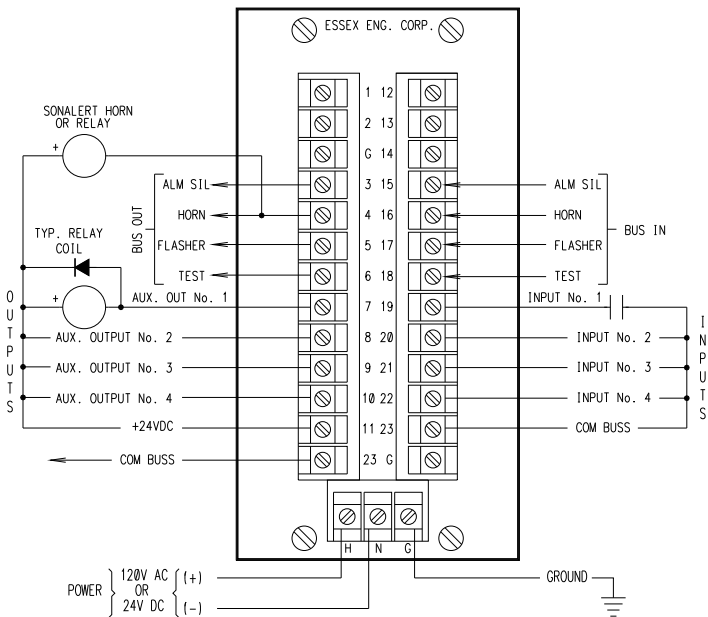


### ALARM SEQUENCE CHART

CONDITION	FIELD CONTACT	ALARM LIGHT	AUDIBLE ALARM*
Normal	Normal	Off	Off
Alarm	Abnormal	Flashing	On
Silence	Abnormal	On	Off
Normal	Normal	Off	Off
Lamp Test	Normal	On	Off

\*Mounted Externally

## ELECTRICAL CONNECTIONS



## MODEL 2404 SPECIFICATIONS

**AMBIENT OPERATING TEMPERATURE RANGE**  
0 to 40 °C

### POWER INPUT

120 VAC  $\pm$  10% 15W max.  
24 VDC  $\pm$  10% 650 mADC max.  
12 VDC  $\pm$  10% 1200 mADC max.

### CURRENT THRU FIELD TROUBLE CONTACT

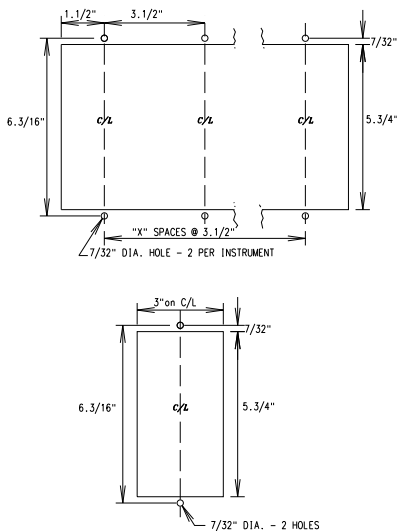
5mADC at 24VDC; optically isolated

### OPTIONAL TIME DELAY

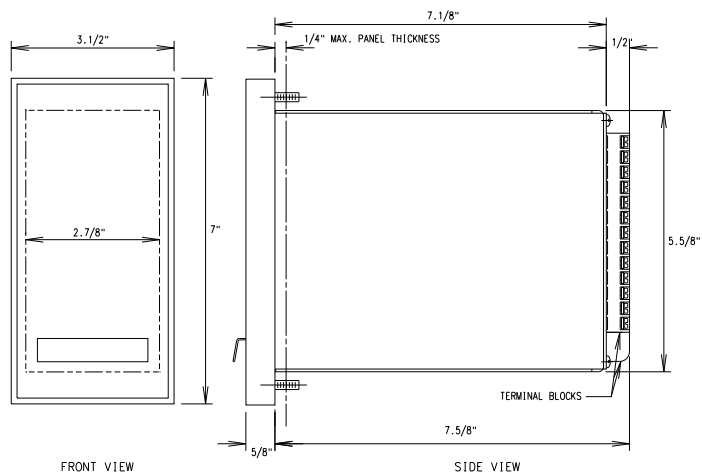
0.1 to 60 second delay is available as a time delay on input before alarm is activated.

### AUXILIARY OUTPUTS

Each alarm point has a NPN transistor auxiliary output capable of driving relays, lights, etc. Maximum transistor rating: 50VDC @ 60mADC.



**CUTOUT DIMENSIONS**



**OVERALL DIMENSIONS**

**REPRESENTED BY**



**ESSEX ENGINEERING CORPORATION**

21 Industrial Drive • Ivyland, PA 18974 • 215-322-5880 • FAX 215-322-8368 • www.essexeng.com